

Intelligent Multi Power Meter

MP-196



CE

FEATURES

- Compact size, standard DIN 96*96
Equipped with four clips to tight the meter on the sheet metal
- Wh<0.5%, with bi-directional energy measurement
- Large size of LCD, easy to operate
- Backlight adjustment in 4-stage
- Current direction setting to correct the display value
- With RS485 communication protocol

SPECIFICATION

Power parameters(Energy) measure

Current: 3 phase, neutral, accuracy 0.2 %
Voltage: 3 phase phase-phase, phase-neutral, accuracy 0.2%
Frequency : 47~63Hz, accuracy 0.2%
Total power : Active, reactive, apparent power, accuracy 0.5%
Power per phase : Active, reactive, apparent power, accuracy 0.5%
Power factor: Total, per phase
Energy : Active, reactive, apparent energy, accuracy 0.5%
Bi-directional energy : Deliver and receive KWh, KVARh, KVAh
KWH : 999999999 kWh

Display & input/output Panel

Display : Mono 68X59 LCD
Digital output : 2 channel relay, for alarm & KWH pulse output
Voltage connection : AC 10-600V(L-L)
Current connection: AC 0-5A RMS
Power supply: AC 80~264V or DC 100~300V

Environmental & Physical

Operation temperature : -20~70°C
Storage temperature : -25~80°C
Humidity : 20~90%RH(non-condensing)
Ingress protection : Front panel : Equivalent to IP 52
Terminal block housing : Equivalent to IP 20

Communication

Primary port : RS-485 Modbus
Speed : 4800, 9600, 19200, 38400, 57600

Demand measure

Bi-directional Block / Rolling Demand

Alarm function(DO)

Over Frequency Alarm, Frequency LOSS Alarm
Over Voltage Alarm, Voltage LOSS Alarm
Over Current Alarm, Current LOSS Alarm
Over KW Dmd Alarm, Any

Both for DO require Aux. Power source

DO : 12-240VAC-DC/120mA MAX

RUNNING HOUR

Load Running Hour
Meter Running Hour

Current direction setting to correct the display value

Automatic check the fault phase connection

Cut out : 91.5X91.5 mm±0.5mm

Complies with :

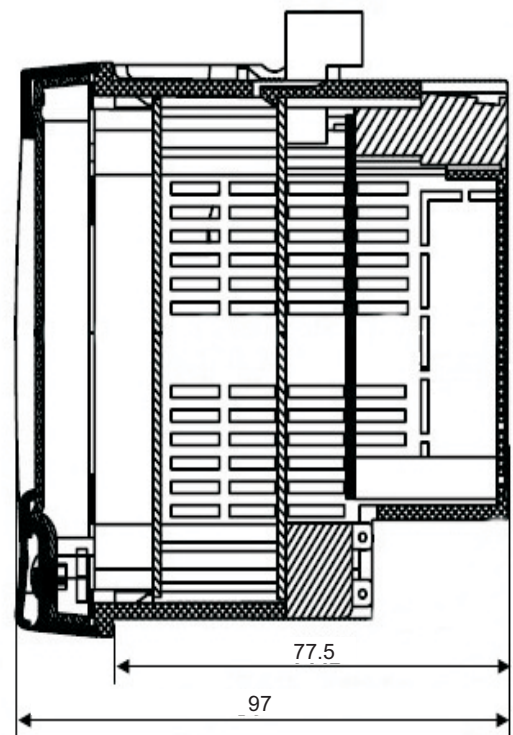
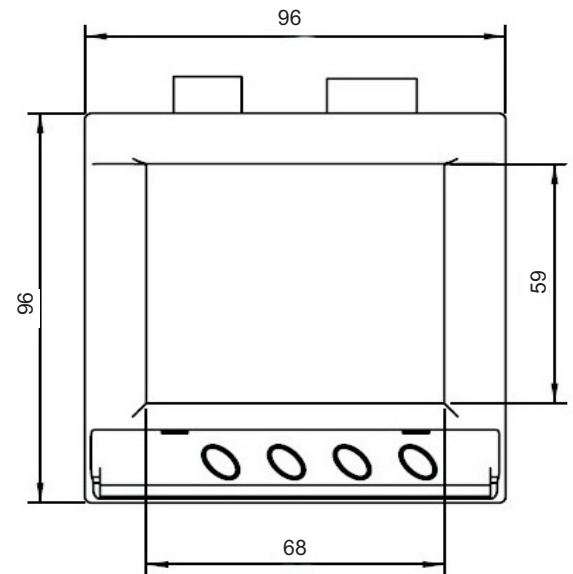
LVD : EN61010-1

CE:

EMC	EMI	
EN61326	IEC61000-4-2	IEC61000-4-6
EN61000-3-2	IEC61000-4-3	IEC61000-4-8
EN61000-3-3	IEC61000-4-4	IEC61000-4-11
	IEC61000-4-5	

FCC : Class A CISPR 22

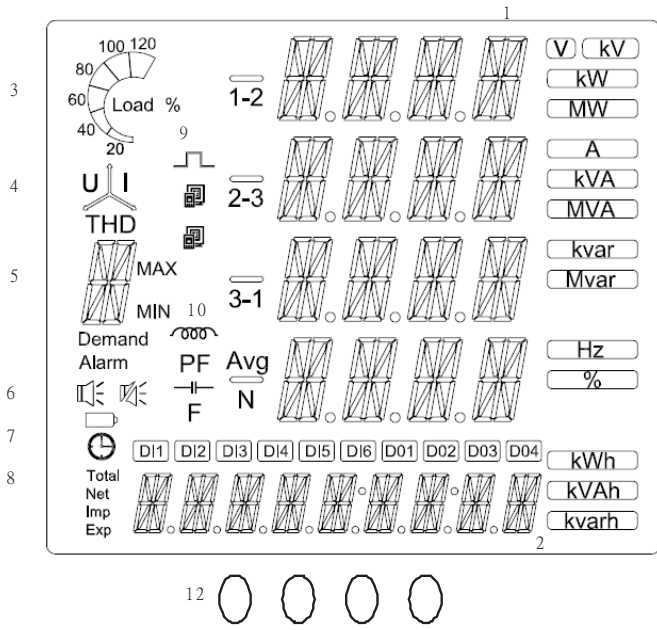
DIEMENSION(mm)



Intelligent Multi Power Meter

MP-I96

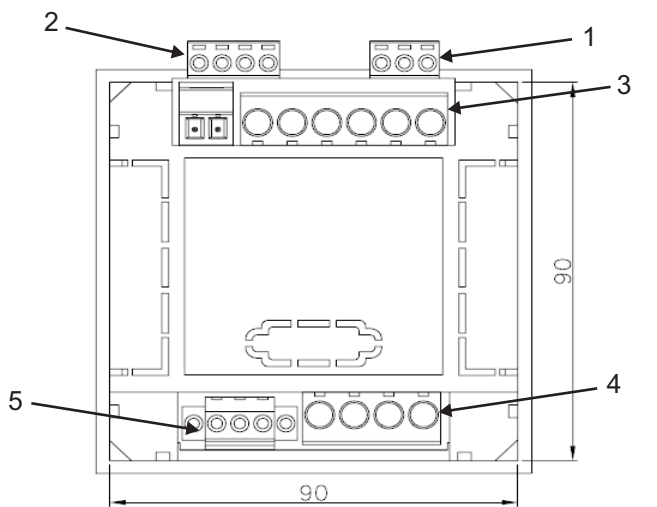
DISPLAY



Item	Display Content
1	Values, for V, I, KW.....Demand, eligibility rate and unbalance rate
2	Values, for energy & time
3	Load percentages
4	Unbalance rate indicator
5	Types of measurement (I,U,E,P...)
6	Alarm buzzer on/off
7	Indicator for time display in zone 2
8	Indicator for energy display in zone 2
9	Indicator for pulse output and communication
10	Display for power factor and load characteristics
11	Units for measurements
12	Function Buttons \overline{M}_1 , \overline{P}_1 , $\overline{E/T}_1$, $\overline{V/A}_1$
13	DO1, DO2 Status

* THD, DI, DO3, DO4 To be available in near future *

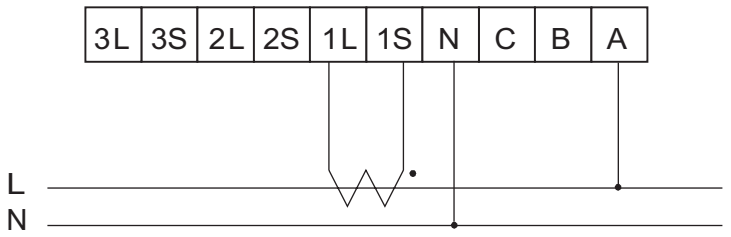
Back view of connect port



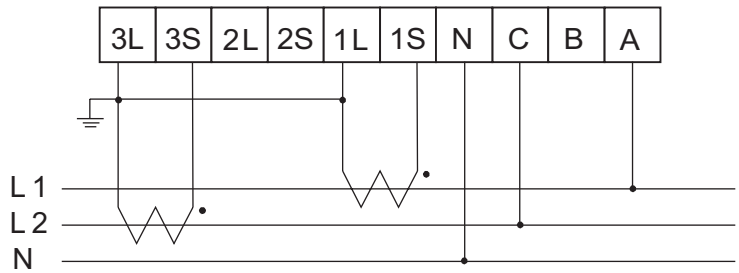
1. Aux Powe (N- , L+)
2. Digital output (Com2 DO2, Com1 Do1)
3. Current Terminal (3L, 3S, 2L, 2S, 1L, 1S)
4. Voltage Terminal (N, C, B, A)
5. RS485 Port (D-, COM, D+)

CONNECTION DIAGRAM

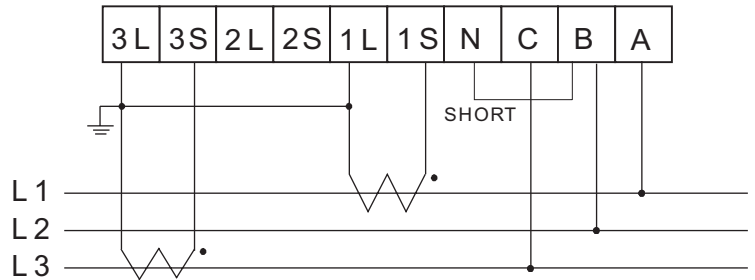
● 1P2W/1CT



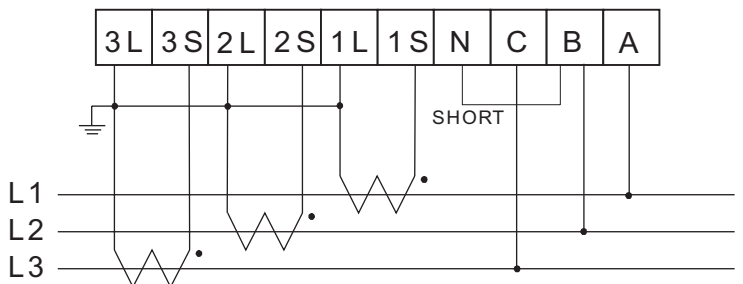
● 1P3W/2CT



● 3P3W/2CT



● 3P3W/3CT



● 3P4W/3CT

